

ARTICOLI MONOUSO
DISPOSABLE ITEMS
ARTICLES DISPOSABLES



PUNTALI MONOUSO PER MICROPIPETTE AUTOMATICHE

Realizzati in PP di elevata purezza ed esente da Cadmio. Posseggono alta trasparenza e ottimo grado di idrorepellenza per ridurre al minimo la ritenzione dei liquidi sulle pareti interne. L'ottimale centratura del foro posto sulla punta garantisce la sicura direzionalità dei liquidi in fase di svuotamento. Questi puntali sono raccomandati per l'utilizzo con le micropipette automatiche Kartell ma garantiscono ottimi risultati anche se utilizzati con le micropipette delle marche più comuni in commercio. I puntali monouso Kartell vengono proposti in tre differenti confezionamenti per soddisfare le diverse esigenze nella maniera maggiormente razionale:

- fusi in sacchetto
- disposti in rack
- in refill come ricarica dei rack

SFUSI IN SACCHETTO

Tutti i puntali monouso Kartell sono disponibili con questo tipo di confezionamento.

TIPS, DISPOSABLE FOR AUTOMATIC MICROPIPETTES

Manufactured from virgin cadmium-free PP. High clarity and excellent water-repellent properties designed to keep sample retention within the tip to a minimum. The precise centering of the orifice at the end of the tip guarantees reliable directionality of the sample when delivered. These tips are recommended for use with the Kartell automatic micropipettes but deliver excellent results even if used with the most other micropipette brands available on the market. Disposable Kartell tips come in three different package types to satisfy a variety of needs as economically as possible:

- bulk bag
- packed in racks
- refills for reloading racks

BULK BAG

All disposable Kartell tips are available in bulk.

EMBOUTS À USAGE UNIQUE POUR MICROPIPETTES AUTOMATIQUES

Réalisés en PP d'une grande pureté et sans Cadmium. Grande transparence et hydrofuge afin de limiter au maximum la rétention des liquides au niveau des parois internes. Le parfait centrage de l'orifice de la pointe permet une orientation optimale des liquides lors de la vidange. Ces embouts sont conseillés pour une utilisation avec les micropipettes automatiques Kartell. Elles donnent aussi de très bons résultats avec les micropipettes des marques les plus courantes. Les embouts à usage unique Kartell sont proposés dans trois coffrets distincts afin de répondre aux exigences les plus diverses:

- en vrac en sacchet
- en rack
- en recharge pour les racks

CÔNES EN SACHET

Tous les embouts à usage unique Kartell sont disponibles dans ce type d'emballage.



RACK

Diversi puntali monouso sono anche confezionati in rack. Le scatole che li contengono sono in PP e dotate di coperchio a pressione. Le scatole che contengono i puntali "macro" (5.000 µl e 10.000 µl) hanno il coperchio scorrevole orizzontalmente. Scatole e puntali possono essere autoclavati a +121°C per 20 minuti.

RACK

Some disposable tips are also available racked. Boxes containing the racks are in PP and have a snap-on lid. Boxes containing "macro" tips (5,000 µl and 10,000 µl) have a sliding horizontal cover. Containers and tips are autoclavable to +121°C for 20 minutes.

RACK

Plusieurs embouts à usage unique sont proposés en rack. Les boîtes qui les contiennent sont réalisées en PP et disposent d'un couvercle à pression. Les boîtes contenant les embouts "macro" de 5000 µl et 10 000 µl disposent d'un couvercle coulissant horizontal. Les boîtes et les embouts peuvent être autoclavés à + 121 °C pendant 20 minutes.



REFILL

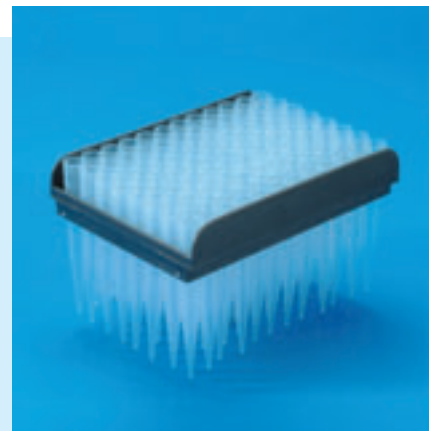
Sistema costituito dal supporto a griglia completo di puntali. Consigliato per il riutilizzo delle scatole ormai vuote dopo l'utilizzo della versione in rack. Disponibile per diverse tipologie di puntale ad eccezione dei puntali "macro" (5.000 µl e 10.000 µl). Opzionalmente per tutti i puntali in refill, ad eccezione dei puntali "macro", sono disponibili le scatole vuote di ricambio in PP di colore giallo. Come alternativa possono essere utilizzate le scatole in policarbonato traslucido dotato di coperchio a scorrimento orizzontale; due differenti misure di altezza possono contenere i puntali in refill fino a 250 µl o fino a 1.000 µl

REFILL

System comprising a support plate with an array of holes containing pipe tips. Designed for the reuse of empty racked tip boxes once the racked tips are used. Several tip styles are available, with the exception of the "macro" tips (5,000 µl and 10,000 µl). As an option for all refill tips, with the exception of "macro" tips (5,000 µl and 10,000 µl), spare empty racked tip boxes are available in yellow PP. As an alternative, clear polycarbonate boxes with a horizontal sliding cover can be used; there are two different formats: one for refill tips with a volume range up to 250 µl and the other for refill tips with a volume range up to 1,000 µl.

RÉCHARGES

Ensemble composé de la grille avec les embouts. Conseillé pour la réutilisation des boîtes désormais vides après l'utilisation de la version en rack. Disponible pour plusieurs types d'embout à l'exception des embouts "macro" (5000 µl et 10 000 µl). Les boîtes vides de recharge en PP jaune sont également disponibles en option pour tous les embouts en recharge, à l'exception des embouts "macro". Les boîtes en polycarbonate translucide avec couvercle coulissant horizontal peuvent également être utilisées. Les deux formats disponibles peuvent contenir les embouts de recharge jusqu'à 250 ml ou jusqu'à 1000 µl.



COMPATIBILITÀ PUNTALI SFUSI
KARTELL

KARTELL TIPS COMPATIBILITY

COMPATIBILITÉ CÔNES
KARTELL

Cod.	Micropipetta Kartell Kartell micropipettes	Rack	Refill	Altre marche micropipette Othe micropipettes brands
959	PLURIPET PL2, PLURIPET PL10, MiniFIX 5, LABOFIX 5, PLURIPET II-20	9650	9746	Eppendorf 0,5 -10 µl - Gilson pipetman - Biohit proline - Brand transfer- pette - dsg slpette - pt10 - dsg wpw-pet 10 µl - Elkay exelpette ex10 - Finnpipette research d10 - Genex genexpette gx10 - Jencons sealpette sp10 - Nichiryo "5000-dg np10" - Socorex
960	PLURIPET PL20, PLURIPET PL100, PLURIPET PL200, PLURIPET II-100, PLURIPET II-200, MULTIPET 8-50, MULTIPET 12-50, MULTIPET 8-300, MULTIPET 12-300, MiniFix 10-20- 25-50-100-200, LABOFIX 10-20-25- 50-100-200	9641	9749	Eppendorf research - Eppendorf reference - Gilson pipetman p20, p100, p200 - Brand transferpette - Biohit proline pr20/pr50/pr100/pr200 - dsg sl-pette pt20/pt50/pt100/pt200 - dsg wpw-pet 20/100/200 ul - Elkay exel- pette ex20/ex50/ex100/ex200 - Finnpipette research d20/d40/d100/d200 - Genex genexpette gx20/gx50/gx100/gx200 - Jencons sealpette sp20/ sp50/sp100/sp200 - Nichiryo "5000-dg np20, np100, np200" - Socorex
961	PLURIPET PL1001, PLURIPET II-1000, MiniFIX 250-500-1000, LABOFIX 250-500-1000	9640	9748	Eppendorf 100 to 1000 ul - gilson pipetman p1000 - biohit proline pr1000 - brand transferpette up to 1000 ul - dsg sl-pette pt1000 - dsg wpw-pet 1000 ul - elkay exelpette ex1000 - finnpipette research d1000 - genex genexpette gx1000 - jencons sealpette sp1000 - nichiryo "5000-dg np1000" - socorex
971	MULTIPET 8-300, MULTIPET 12-300	9644	9752	Biohit - Finnpiette research - Labsystem - Gilson pipetman p200
958	PLURIPET PL20, PLURIPET PL100, PLURIPET PL200, MULTIPET 8-50, MULTIPET 12-50, MULTIPET 8-300, MULTIPET 12-300, MiniFix 10-20- 25-50-100-200, LABOFIX 10-20-25- 50-100-200	9643	9750	Gilson pipetman p1000 - Eppendorf 100 to 1000 ul - Biohit proline pr1000 - dsg slpette pt1000 - dsg wpw-pet 1000 ul - Elkay exelpette ex1000 - Finnpiette research d1000 - Genex genexpette gx1000 - Jen- cons sealpette sp1000 - Nichiryo "5000- dg np1000" - Socorex - Oxford
935	-	9647	9754	Eppendorf 20 to 300 ul - Gilson pipetman p100, p200 - Brand transfer- pette 20 to 300 ul - Biohit / Elkay / Jencons 20 to 300 ul - Finnpiette research d100, d200 - Nichiryo "5000-dg np100, np200" - Socorex
941	PLURIPET PL1001	9645	9753	Gilson pipetman p1000 - Eppendorf 100 to 1000 ul - Biohit proline pr1000 - dsg slpette pt1000 - dsg wpw-pet 1000 ul - Elkay exelpette ex1000 - Finnpiette research d1000 - Genex genexpette gx1000 - Jen- cons sealpette sp1000 - Nichiryo "5000- dg np1000" - Socorex - Oxford
940	PLURIPET PL20, PLURIPET PL100, PLURIPET PL200, MULTIPET 8-300, MULTIPET 12-300	9642	9751	Gilson pipetman p20, p100, p200 - Eppendorf research - Eppendorf refer- ence - Biohit proline pr20/pr50/pr100/pr200 - dsg sl-pette pt20/pt50/ pt100/pt200 - dsg wpw-pet 20/100/200 ul - Elkay exelpette ex20/ex50/ ex100/ex200 - Finnpiette research d20/d40/d100/d200 - Genex gen- expette gx20/gx50/gx100/gx200 - Jencons sealpette sp20/sp50/sp100/ sp200 - Nichiryo "5000-dg np20, np100, np200"
956	PLURIPET PL2, PLURIPET PL10, PLURIPET II-2, PLURIPET II-10, MiniFIX 5, LABOFIX 5	9646	9747	Gilson pipetman p2, p10 - Eppendorf 0,1 - 2,5 ul - Biohit proline pr10 - dsg sl-pette pt10 - Elkay exelpette ex10 - Finnpiette research d2/d10 - Genex genexpette gx10 - Jencons sealpette sp10 - Nichiryo "5000-dg np2, np10"
979	PLURIPET PL20	9657	9745	Eppendorf research - Eppendorf reference
984	PLURIPET PL5.000, PLURIPET II- 5.000	9648	-	Gilson pipetman p500 - Nichiryo "5000-dg np5000" - Socorex "calibra 832-2000"
964	PLURIPET PL5.000	9649	-	Biohit proline pr5000 - dsg sl-pette pt5000 - dsg wpw-pet 5000 ul - Ep- pendorf research 500 to 5000 ul - Genex genexpette gx5000 - Jencons sealpette sp5000 - Socorex new
943	PLURIPET PL10.000, PLURIPET II- 10.000	9848	-	Gilson pipetman p10 ml - Finnpiette research - Socorex - Labsystem
942	-	-	-	Finnpiette research - Labsystem - Brand
944	-	-	-	Gilson - Eppendorf - Biohit - Socorex - HTL
963	-	-	-	Oxford - Finnpiette research - Labsystem
965	-	-	-	Beckman - Sherwood - Lancer
966	-	-	-	Oxford slimline - Diamed microtyp system
967	-	-	-	Oxford - Finnpiette research - Labsystem
968	-	-	-	MLA
969	-	-	-	MLA - Finnpiette colour
957	-	-	-	Kartell - Gilson - Eppendorf - Biohit - Hamilton

COMPATIBILITÀ PUNTALI
IN ORDINE DI MARCHIO
MICROPIPETTAKARTELL TIPS COMPATIBILITY
WITH MOST COMMON
MICROPIPETTE BRANDSCOMPATIBILITÉ CÔNES
KARTELL SELON MARQUES
MICROPIPETTES

Marca micropipetta	Cap.	Colore Colour Coulour	Sfusi Stusi Stufsi	In rack In rack In rack	Refill/Rack	In Rack econ.	Con filtro in rack
Beckman®	-1000 µl	Neutro	965	-	-	-	-
Biohit®	0,5 - 10 µl	Crystal	956	9646	9747	-	9638
Biohit®	2 - 200 µl	Giallo	960	9641	9749	9605	9632
Biohit®	2 - 300 µl	Neutro	971	9644	9752	-	100 µl Neutro
Biohit®	10 - 300 µl	Neutro	935	9647	9754	-	-
Biohit®	100 - 1000 µl	Blu	961	9640	9748	-	9637
Biohit®	200 - 1000 µl	Blu	957	-	-	9615	9631 Neutro
Biohit®	1000 - 5000 µl	Neutro	964	9649	-	-	-
Brand®	2 - 200 µl	Giallo	960	9641	9749	9605	9632
Brand®	100 - 1000 µl	Blu	961	9640	9748	-	100 µl Neutro
Brand®	1000 - 5500 µl	Neutro	942	-	-	-	9631 Neutro

COMPATIBILITÀ PUNTALI
IN ORDINE DI MARCHIO
MICROPIPETTAKARTELL TIPS COMPATIBILITY
WITH MOST COMMON
MICROPIPETTE BRANDSCOMPATIBILITÉ CÔNES
KARTELL SELON MARQUES
MICROPIPETTES

Marca micropipetta	Cap.	Colore Colour Coulour	Sfusi Sfusi Sfusi	In rack In rack In rack	Refill/Rack	In Rack econ.	Con filtro in rack
Eppendorf®	0,5 - 10 µl	Crystal	959	9650	9746	9642	9630
Eppendorf®	2 - 20 µl	Neutro	979	9657	9745	-	9639
Eppendorf®	2 - 200 µl	Giallo	960	9641	9749	9605	9632 100 µl Neutro
Eppendorf®	10 - 300 µl	Neutro	935	9647	9754	-	9637
Eppendorf®	100 - 1000 µl	Blu	961	9640	9748	-	9631 Neutro
Eppendorf®	200 - 1000 µl	Blu	957	-	-	9615	-
Eppendorf®	1000 - 5000 µl	Neutro	964	9649	-	-	-
Finnpipette®	0,5 - 10 µl	Crystal	956	9646	9747	-	9638
Finnpipette®	2 - 300 µl	Neutro	971	9644	9752	-	-
Finnpipette®	1000 - 5500 µl	Neutro	942	9847	-	-	-
Finnpipette®	1000 - 10000 µl	Neutro	943	9648	-	-	-
Gilson® (P-2 + P-10)	0,5 - 10 µl	Crystal	956	9646	9747	-	9638
Gilson® (P-20)	0,5 - 10 µl	Crystal	959	9650	9746	9624	9630
Gilson® (P-20 a 200)	2 - 200 µl	Giallo	958	9642	9750	9585	-
Gilson® (P-20 a 200)	5 - 200 µl	Neutro	940	9643	9751	-	9635 100 µl 9636 160 µl
Gilson® (P-500 + 1000)	100 - 1000 µl	Blu	941	9645	9753	-	9633 Neutro
Gilson® (universale)	2 - 20 µl	Neutro	979	9657	9745	-	-
Gilson® (universale)	2 - 200 µl	Giallo	960	9641	9749	9605	9632 100 µl Neutro
Gilson® (universale)	2 - 300 µl	Neutro	971	9644	9752	-	-
Gilson® (universale)	10 - 300 µl	Neutro	935	9647	9754	-	9637
Gilson® (universale)	100 - 1000 µl	Blu	961	9640	9748	-	9631 Neutro
Gilson® (universale)	200 - 1000 µl	Blu	957	-	-	9615	-
Gilson® (universale)	1000 - 5000 µl	Blu	984	9648	-	-	-
Gilson® (universale)	1000 - 10000 µl	Neutro	943	9648	-	-	-
Kartell®	0,5 - 10 µl	Crystal	959	9650	9746	9624	9630
Kartell®	2 - 200 µl	Giallo	960	9641	9749	6905	9632 100 µl Neutro
Kartell®	100 - 1000 µl	Blu	961	9640	9748	-	9631 Neutro
Kartell®	200 - 1000 µl	Blu	957	-	-	9615	-
Kartell®	1000 - 5000 µl	Neutro	964	9649	-	-	-
Kartell®	1000 - 10000 µl	Neutro	943	9648	-	-	-
MLA®	5 - 200 µl	Neutro	968	-	-	-	-
MLA®	200 - 1000 µl	Neutro	968	-	-	-	-
Nichiryo®	0,5 - 10 µl	Crystal	959	9650	9746	9624	9630
Nichiryo®	2 - 200 µl	Giallo	960	9641	9749	9605	9632 100 µl Neutro
Nichiryo®	100 - 1000 µl	Blu	961	9640	9748	-	9631 Neutro
Nichiryo®	1000 - 5000 µl	Blu	984	9648	-	-	-
Oxford Slimline®	5 - 200 µl	Neutro	966	-	-	-	-
Oxford Slimline®	250 - 1000 µl	Blu	967	-	-	-	-
Oxford® (orig.)	5 - 200 µl	Neutro	962	-	-	-	-
Oxford® (orig.)	250 - 1000 µl	Verde	963	-	-	-	-
Oxford® (orig.)	1000 - 5000 µl	Neutro	964	9649	-	-	-
Sherwood® / Lancer®	- 1000 µl	Neutro	965	-	-	-	-
Socorex®	0,5 - 10 µl	Crystal	959	9650	9746	9624	9630
Socorex®	2 - 200 µl	Giallo	960	9641	9749	9605	9632 100 µl Neutro
Socorex®	100 - 1000 µl	Blu	961	9640	9748	-	9631 Neutro
Socorex®	1000 - 5000 µl	Blu	984	9648	-	-	-
Socorex®	1000 - 10000 µl	Neutro	943	9648	-	-	-
Treff®	100 - 1000 µl	Blu	961	9640	9748	-	9631 Neutro
Treff®	1000 - 5500 µl	Neutro	942	9847	-	-	-



CAPACITÀ 0,5-20 µL

Compatibilità: Gilson®

CAPACITY 0,5-20 µL

Compatibility: Gilson®

CAPACITÉ 0,5-20 µL

Compatibilité: Gilson®

Art.	Colore / Colour / Couleur	Tipo / Type / Type	Confezione / Packing / Conditionnement
956	Neutro / neutral / neutre	Gilson® micro	Sfusi / Bulk
9646	Neutro / neutral / neutre	Gilson® micro	Rack
9747	Neutro / neutral / neutre	Gilson® micro	Refill



CAPACITÀ 0,5-10 µL

Compatibilità: Kartell®, Pluripet PL10, Eppendorf®, Socorex®, Hamilton®

CAPACITY 0,5-10 µL

Compatibility: Kartell®, Pluripet PL10, Eppendorf®, Socorex®, Hamilton®

CAPACITÉ 0,5-10 µL

Compatibilité: Kartell®, Pluripet PL10, Eppendorf®, Socorex®, Hamilton®

Art.	Colore / Colour / Couleur	Tipo / Type / Type	Confezione / Packing / Conditionnement
959	Neutro / neutral / neutre	Eppendorf® Cristall	Sfusi / Bulk
9650	Neutro / neutral / neutre	Eppendorf® Cristall	Rack
9746	Neutro / neutral / neutre	Eppendorf® Cristall	Refill



CAPACITÀ 2-20 µL

Compatibilità: Eppendorf®, Gilson®, Hamilton®

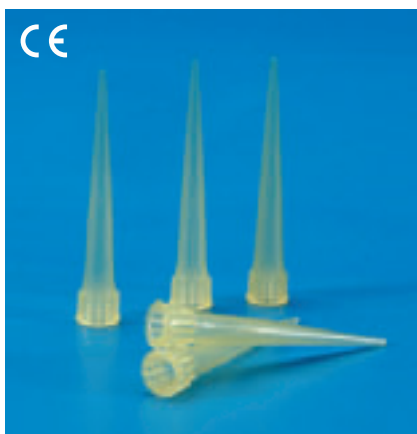
CAPACITY 2-20 µL

Compatibility: Eppendorf®, Gilson®, Hamilton®

CAPACITÉ 2-20 µL

Compatibilité: Eppendorf®, Gilson®, Hamilton®

Art.	Colore / Colour / Couleur	Tipo / Type / Type	Confezione / Packing / Conditionnement
979	Neutro / neutral / neutre	Eppendorf®	Sfusi / Bulk
9657	Neutro / neutral / neutre	Eppendorf®	Rack
9745	Neutro / neutral / neutre	Eppendorf®	Refill



CAPACITÀ 5-200 µL

Compatibilità: Kartell®, Gilson®, Eppendorf®, Socorex®, Nichiryo®, Biohit®, Brand®, Hamilton® Kartell® multipet

CAPACITY 5-200 µL

Compatibility: Kartell®, Gilson®, Eppendorf®, Socorex®, Nichiryo®, Biohit®, Brand®, Hamilton® Kartell® multipet

CAPACITÉ 5-200 µL

Compatibilité: Kartell®, Gilson®, Eppendorf®, Socorex®, Nichiryo®, Biohit®, Brand®, Hamilton® Kartell® multipet

Art.	Colore / Colour / Couleur	Tipo / Type / Type	Confezione / Packing / Conditionnement
960	Giallo / Yellow / Jaune	Universal	Sfusi / Bulk
9641	Giallo / Yellow / Jaune	Universal	Rack
9749	Giallo / Yellow / Jaune	Universal	Refill
980	Giallo grad. / Yellow grad. / Jaune grad.	Universal	Sfusi / Bulk

CAPACITÀ 5-200 µL

Compatibilità: Gilson®, Kartell® multipet

CAPACITY 5-200 µL

Compatibility: Gilson®, Kartell® multipet

CAPACITÉ 5-200 µL

Compatibilité: Gilson®, Kartell® multipet

Art.	Colore / Colour / Couleur	Tipo / Type / Type	Confezione / Packing / Conditionnement
958	Giallo / Yellow / Jaune	Gilson®	Sfusi / Bulk
9642	Giallo / Yellow / Jaune	Gilson®	Rack
9750	Giallo / Yellow / Jaune	Gilson®	Refill



CAPACITÀ 5-200 µL

Compatibilità: Gilson®, Kartell® multipet

CAPACITY 5-200 µL

Compatibility: Gilson®, Kartell® multipet

CAPACITÉ 5-200 µL

Compatibilité: Gilson®, Kartell® multipet

Art.	Colore / Colour / Couleur	Tipo / Type / Type	Confezione / Packing / Conditionnement
940	Neutro grad. / neutral grad. / neutre grad.	Gilson®	Sfusi / Bulk
9643	Neutro grad. / neutral grad. / neutre grad.	Gilson®	Rack
9751	Neutro grad. / neutral grad. / neutre grad.	Gilson®	Refill



CAPACITÀ 5-200 µL

Compatibilità: MLA®

CAPACITY 5-200 µL

Compatibility: MLA®

CAPACITÉ 5-200 µL

Compatibilité: MLA®

Art.	Colore / Colour / Couleur	Tipo / Type / Type	Confezione / Packing / Conditionnement
968	Neutro / neutral / neutre	MLA®	Sfusi / Bulk



PUNTALE 200 µL A PUNTA FINE

In confezione sfusa, per l'utilizzo con provette particolarmente lunghe il cui fondo è normalmente poco raggiungibile con i prodotti standard. Sterilizzato, confezionato in rack da 96 posti e concepito per il Gel Loading.

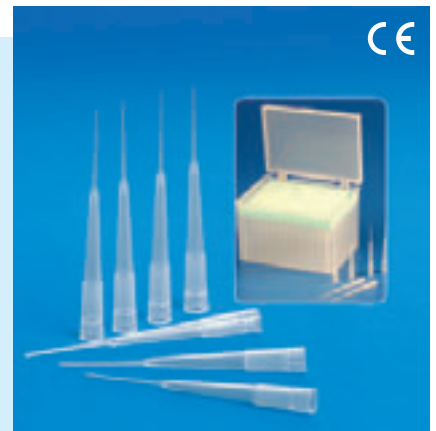
FINE TIP 200 µL

To be used whenever it is difficult to reach the test tubes bottom with the standard products. Sterile rack of 96 fine tips 200 µl, packed conceived for Gel Loading.

CÔNE 200 µL

Cône 200 µl à pointe fine, en vrac, pour l'utilisation avec tubes à essais particulièrement longues, dont le fond est normalement peu joignable avec les produits standard. Cône 200 µl à pointe fine, stérilisé, dans rack de 96 places et conçu pour le GEL LOADING.

Art.	Colore / Colour / Couleur	Tipo / Type / Type	Confezione / Packing / Conditionnement
944	Neutro / neutral / neutre	Fine Tip - gel loading	Sfusi / Bulk
9846	Neutro / neutral / neutre	Fine Tip - gel loading	Rack sterile





CAPACITÀ 5-200 µL

Compatibilità: Oxford® (slim line)

CAPACITY 5-200 µL

Compatibilità: Oxford® (slim line)

CAPACITÉ 5-200 µL

Compatibilità: Oxford® (slim line)

Art.	Colore / Colour / Couleur	Tipo / Type / Type	Confezione / Packing / Conditionnement
966	Neutro / neutral / neutre	Oxford®	Sfusi / bulk



CAPACITÀ 2-300 µL

Compatibilità: Kartell®, Biohit®, Gilson®, Finnpiquette®, Labssystem®

CAPACITY 2-300 µL

Compatibility: Kartell®, Biohit®, Gilson®, Finnpiquette®, Labssystem®

CAPACITÉ 2-300 µL

Compatibilità: Kartell®, Biohit®, Gilson®, Finnpiquette®, Labssystem®

Art.	Colore / Colour / Couleur	Tipo / Type / Type	Confezione / Packing / Conditionnement
971	Neutro / neutral / neutre	Biohit®	Sfusi / Bulk
9644	Neutro / neutral / neutre	Biohit®	Rack
9752	Neutro / neutral / neutre	Biohit®	Refill



CAPACITÀ 10-300 µL

Compatibilità: Eppendorf®, Gilson®, Biohit®, Hamilton®

CAPACITY 10-300 µL

Compatibility: Eppendorf®, Gilson®, Biohit®, Hamilton®

CAPACITÉ 10-300 µL

Compatibilità: Eppendorf®, Gilson®, Biohit®, Hamilton®

Art.	Colore / Colour / Couleur	Tipo / Type / Type	Confezione / Packing / Conditionnement
935	Neutro grad. / neutral grad. / neutre grad.	Eppendorf®	Sfusi / Bulk
9647	Neutro grad. / neutral grad. / neutre grad.	Eppendorf®	Rack
9754	Neutro grad. / neutral grad. / neutre grad.	Eppendorf®	Refill



CAPACITÀ 100-1000 µL

Compatibilità: Kartell®, Gilson®, Brand®, Nichiryo®, Biohit®, Socorex®, Eppendorf®, Hamilton®

CAPACITY 100-1000 µL

Compatibility: Kartell®, Gilson®, Brand®, Nichiryo®, Biohit®, Socorex®, Eppendorf®, Hamilton®

CAPACITÉ 100-1000 µL

Compatibilità: Kartell®, Gilson®, Brand®, Nichiryo®, Biohit®, Socorex®, Eppendorf®, Hamilton®

Art.	Colore / Colour / Couleur	Tipo / Type / Type	Confezione / Packing / Conditionnement
961	Blu / blue / bleu	Universal	Sfusi / Bulk
9640	Blu / blue / bleu	Universal	Rack
9748	Blu / blue / bleu	Universal	Refill

CAPACITÀ 100-1000 µL

Compatibilità: **Kartell®**, PL1001, Eppendorf® (100-1000 µl), Gilson®, Socorex®, Hamilton®

CAPACITY 100-1000 µL

Compatibility: **Kartell®**, PL1001, Eppendorf® (100-1000 µl), Gilson®, Socorex®, Hamilton®

CAPACITÉ 100-1000 µL

Compatibilité: **Kartell®**, PL1001, Eppendorf® (100-1000 µl), Gilson®, Socorex®, Hamilton®

Art.	Colore / Colour / Couleur	Tipo / Type / Type	Confezione / Packing / Conditionnement
941	Blu / blue / bleu	Gilson®	Sfusi / Bulk
9645	Blu / blue / bleu	Gilson®	Rack
9753	Blu / blue / bleu	Gilson®	Refill



CAPACITÀ 200-1000 µL

Compatibilità: **Kartell®**, Gilson®, Eppendorf®, Biohit®, Hamilton®

CAPACITY 200-1000 µL

Compatibility: **Kartell®**, Gilson®, Eppendorf®, Biohit®, Hamilton®

CAPACITÉ 200-1000 µL

Compatibilité: **Kartell®**, Gilson®, Eppendorf®, Biohit®, Hamilton®

Art.	Colore / Colour / Couleur	Tipo / Type / Type	Confezione / Packing / Conditionnement
957	Blu / blue / bleu	Universal	Sfusi / bulk



CAPACITÀ 200-1000 µL

Compatibilità: **MLA®**

CAPACITY 200-1000 µL

Compatibility: **MLA®**

CAPACITÉ 200-1000 µL

Compatibilité: **MLA®**

Art.	Colore / Colour / Couleur	Tipo / Type / Type	Confezione / Packing / Conditionnement
969	Neutro / neutral / neutre	MLA®	Sfusi / bulk



CAPACITÀ 250-1000 µL

Compatibilità: **Oxford®** (old model)

CAPACITY 250-1000 µL

Compatibility: **Oxford®** (old model)

CAPACITÉ 250-1000 µL

Compatibilité: **Oxford®** (old model)

Art.	Colore / Colour / Couleur	Tipo / Type / Type	Confezione / Packing / Conditionnement
963	Neutro / neutral / neutre	Oxford®	Sfusi / bulk





CAPACITÀ 250-1000 µL

Compatibilità: Oxford® (slim line)

CAPACITY 250-1000 µL

Compatibility: Oxford® (slim line)

CAPACITÉ 250-1000 µL

Compatibilité: Oxford® (slim line)

Art.	Colore / Colour / Couleur	Tipo / Type / Type	Confezione / Packing / Conditionnement
967	Blu / blue / bleu	Oxford®	Sfusi / bulk



CAPACITÀ 250-1000 µL

Compatibilità: Beckman®, Sherwood®, Lancer®

CAPACITY 250-1000 µL

Compatibility: Beckman®, Sherwood®, Lancer®

CAPACITÉ 250-1000 µL

Compatibilité: Beckman®, Sherwood®, Lancer®

Art.	Colore / Colour / Couleur	Tipo / Type / Type	Confezione / Packing / Conditionnement
965	Neutro / neutral / neutre	Beckman®	Sfusi / bulk



CAPACITÀ 1000-5000 µL

Compatibilità: Kartell®, Gilson®, Socorex®, Nichiryo®

CAPACITY 1000-5000 µL

Compatibility: Kartell®, Gilson®, Socorex®, Nichiryo®

CAPACITÉ 1000-5000 µL

Compatibilité: Kartell®, Gilson®, Socorex®, Nichiryo®

Art.	Colore / Colour / Couleur	Tipo / Type / Type	Confezione / Packing / Conditionnement
984	Blu chiaro / blue light / bleu	Kartell® Pluripet std and Pluripet II, Gilson®, Socorex®, Nichiryo®	Sfusi / bulk
9648	Blu chiaro / blue light / bleu	Kartell® Pluripet std and Pluripet II, Gilson®, Socorex®, Nichiryo®	Rack



CAPACITÀ 1000-5000 µL

Compatibilità: Kartell®, Eppendorf®, Biohit®, Oxford®, Hamilton

CAPACITY 1000-5000 µL

Compatibility: Kartell®, Eppendorf®, Biohit®, Oxford®, Hamilton

CAPACITÉ 1000-5000 µL

Compatibilité: Kartell®, Eppendorf®, Biohit®, Oxford®, Hamilton

Art.	Colore / Colour / Couleur	Tipo / Type / Type	Confezione / Packing / Conditionnement
964	Neutro / neutral / neutre	Kartell® Pluripet std, Eppendorf®, Biohit®, Oxford®	Sfusi / bulk
9649	Neutro / neutral / neutre	Kartell® Pluripet std, Eppendorf®, Biohit®, Oxford®	Rack

CAPACITÀ 1000-5000 µL

Compatibilità: Finnpiquette®, Treff, Brand®

CAPACITY 1000-5000 µL

Compatibility: Finnpiquette®, Treff, Brand®

CAPACITÉ 1000-5000 µL

Compatibilité: Finnpiquette®, Treff, Brand®

Art.	Colore / Colour / Couleur	Tipo / Type / Type	Confezione / Packing / Conditionnement
942	Neutro / neutral / neutre	Finnpiquette®	Sfusi / bulk
9847	Neutro / neutral / neutre	Finnpiquette®	Rack



CAPACITÀ 2000-10000 µL

Compatibilità: Gilson®, Socorex®, Labsystem®, Finnpiquette®, Kartell®

CAPACITY 2000-10000 µL

Compatibility: Gilson®, Socorex®, Labsystem®, Finnpiquette®, Kartell®

CAPACITÉ 2000-10000 µL

Compatibilité: Gilson®, Socorex®, Labsystem®, Finnpiquette®, Kartell®

Art.	Colore / Colour / Couleur	Tipo / Type / Type	Confezione / Packing / Conditionnement
943	Neutro / neutral / neutre	Gilson®	Sfusi / bulk
9848	Neutro / neutral / neutre	Gilson®	Rack



SCATOLE VUOTE PER REFILL

Scatole vuote in PP di colore giallo, con coperchio a pressione, da utilizzare in combinazione con i puntali in refill.

EMPTY BOXES FOR REFILL

Empty yellow PP boxes with snap-on covers for use with refill tips.

BOÎTES VIDES POUR REFILL

Boîtes vides PP jaune avec couvercle à pression, à utiliser avec cônes refill.

Art.	Colore / Colour / Couleur	Tipo / Type / Type	Materiale / Material / Matière
9756-06	Giallo / yellow / jaune	PP	Coperchio standard / standard lid / couvercle standard



SCATOLE VUOTE SEMITRASPARENTI PER REFILL

Scatole vuote semitrasparenti realizzate in polycarbonato. Dotate di coperchio a scorrimento orizzontale. Disponibili nella forma bassa per puntali fino a 250 µl (cod.9755/L) e nella forma standard (cod.9755) per puntali fino a 1.000 µl

SEMITRASPARENT EMPTY BOXES FOR REFILLS

Empty semitransparent boxes in polycarbonate with horizontal sliding cover. Available in short format for tips with a volume range up to 250 µl (Product Code 9755/L) and standard format for tips with a volume range up to 1,000 µl (Product Code 9755).

BOÎTES VIDES SEMITRASPARENTES POUR REFILL

Boîtes vides semitransparentes en polycarbonate avec couvercle glissante à l'horizontal. Disponible forme basse pour cônes vol. jusqu'à 250 µl (réf. 9755/L) et forme std. pour cônes vol. jusqu'à 1000 µl (réf 9755).

Art.	Colore / Colour / Couleur	Tipo / Type / Type	Materiale / Material / Matière
9755	Semi trasparen. Forma bassa / short form / forme basse	PC	Coperchio scorrevole / sliding lid / couvercle coulissant
9755 / L	Semi trasparen. Forma bassa / short form / forme basse	PC	Coperchio scorrevole / sliding lid / couvercle coulissant





CAPACITÀ 0,5-10 µL

PC/PP

Compatibilità: **Kartell®**, Eppendorf®, Socorex®, Hamilton® Rack in policarbonato contenenti puntali in PP.

CAPACITY 0,5-10 µL

PC/PP

Compatibility: **Kartell®**, Eppendorf®, Socorex®, Hamilton® Rack in polycarbonate containing tips in PP.

CAPACITÉ 0,5-10 µL

PC/PP

Compatibilité: **Kartell®**, Eppendorf®, Socorex®, Hamilton® Rack in polycarbonate contenant des pointes en PP.

Art.	Colore Colour Couleur	Materiale rack Rack Material Matière du rack	Tipo Type Type	Confezione Packing Conditionnement
9624	Neutro / neutral / neutre	PP	Eppendorf® Cristall	Rack



CAPACITÀ 2-200 µL

PC/PP

Compatibilità: Art.9585: Gilson®, Art.9605: **Kartell®**, Eppendorf®, Socorex®, Finnpiquette®, Brand®, Hamilton®

CAPACITY 2-200 µL

PC/PP

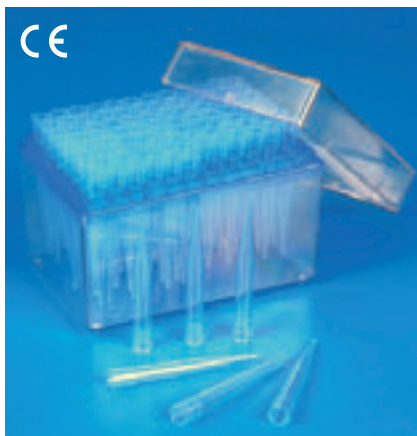
Compatibility: Art.9585: Gilson®, Art.9605: **Kartell®**, Eppendorf®, Socorex®, Finnpiquette®, Brand®, Hamilton®

CAPACITÉ 2-200 µL

PC/PP

Compatibilité: Art.9585: Gilson®, Art.9605: **Kartell®**, Eppendorf®, Socorex®, Finnpiquette®, Brand®, Hamilton®

Art.	Colore Colour Couleur	Materiale rack Rack Material Matière du rack	Tipo Type Type	Confezione Packing Conditionnement
9585	Giallo / yellow / jaune	PP	Gilson®	Rack
9605	Giallo / yellow / jaune	PP	Universal	Rack



CAPACITÀ 100-1000 µL

PC/PP

Compatibilità: **Kartell®**, Eppendorf®, Gilson®, Socorex®, Finnpiquette®, Brand®, Hamilton®

CAPACITY 100-1000 µL

PC/PP

Compatibility: **Kartell®**, Eppendorf®, Gilson®, Socorex®, Finnpiquette®, Brand®, Hamilton®

CAPACITÉ 100-1000 µL

PC/PP

Compatibilité: **Kartell®**, Eppendorf®, Gilson®, Socorex®, Finnpiquette®, Brand®, Hamilton®

Art.	Colore Colour Couleur	Materiale rack Rack Material Matière du rack	Tipo Type Type	Confezione Packing Conditionnement
9615	Blu / blue / bleu	PP	Universal	Rack

PUNTALI STERILIZZATI
MONOUSO CON FILTRO

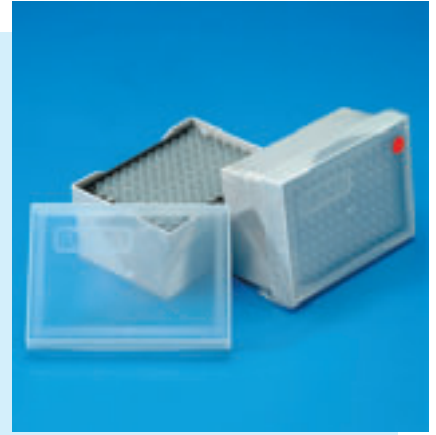
Realizzati in PP e dotati di filtro, sono totalmente esenti da DNA, RNA, Cadmio e sono apirogeni. Sterilizzati con radiazioni Gamma, possono essere autoclavati a +121°C per 20 minuti. Ideali per impieghi in biologia molecolare, colture cellulari, batteriologia, virologia, immunologia e radioimmunologia. I filtri idrofobici in PE agiscono da barriera contro gli aerosol evitando sia le contaminazioni incrociate dei campioni che della micropipetta. Posseggono fori di dimensione tale che in caso di aspirazione eccessiva garantiscono il totale svuotamento del puntale. Questi puntali sono raccomandati per l'utilizzo con le micropipette automatiche Kartell ma garantiscono ottimi risultati anche se utilizzati con le micropipette delle marche più comuni in commercio.

STERILE DISPOSABLE PIPETTE
TIPS WITH FILTER

Made of PP and including a filter, these tips are DNA-free, RNA-free, cadmium-free and are apyrogenic. Sterilized by gamma radiation, they are autoclavable at +121°C for 20 minutes. Designed for use in molecular biology, cell cultures, bacteriology, virology, immunology and radioimmunology. "Hydrophobic PE filters act as a barrier against aerosol contamination, preventing cross-contamination of samples and micropipettes. Tip orifices are sized to completely empty the tip in the event of over-aspiration." Although recommended for use in automatic Kartell micropipettes, these tips deliver optimum results when used with most micropipette brands available on the market.

EMBOUTS STÉRILISÉS À
USAGE UNIQUE AVEC FILTRE

Réalisés en PP et avec filtre, ces éléments sont exempts d'ADN, d'ARN et de Cadmium et sont parfaitement apyrogènes. Stérilisés aux rayons Gamma, les éléments peuvent être autoclavés à + 121 °C pendant 20 minutes. Parfaitement adaptés à la biologie moléculaire, aux cultures cellulaires, en bactériologie, virologie, immunologie et radio-immunologie. Les filtres hydrophobes en PE font office de barrière contre les aérosols, évitant ainsi les contaminations croisées des échantillons et de la micropipette. Ils sont dotés d'orifices tels qu'en cas d'aspiration trop forte, l'embout est intégralement vidé. Ces embouts sont conseillés pour une utilisation avec les micropipettes automatiques Kartell. Elles donnent aussi de très bons résultats avec les micropipettes des marques les plus courantes.

COMPATIBILITÀ PUNTALI
KARTELL CON FILTROKARTELL FILTER TIPS
COMPATIBILITYCOMPATIBILITÉ CÔNES
KARTELL AVEC FILTRE

Cod.	Micropipetta Kartell <i>Kartell micropipettes</i>	Altre marche micropipette <i>Other micropipettes brands</i>
9629	PLURIPET PL200, PLURIPET PL20, PLURIPET PL100	Eppendorf - Gilson pipetman - Biohit proline - dsg sl-pette - dsg wpw-pet - Elkay exel-pette - Finnpiette research - Genex genexpette - Jencons sealpette - Nichiryo - Socorex
9630	PLURIPET PL2, PLURIPET PL10	Eppendorf research - reference 10 µl - Gilson pipetman 10 µl - Biohit proline 10 µl - Brand transferpette 10 µl - dsg sl-pette 10 µl - dsg wpw - pet 10 µl - Elkay exel-pette 10 µl - Finnpiette research 10 µl - Genex genexpette 10 µl - Jencons sealpette 10 µl - Nichiryo 10 µl - Socorex 10 µl
9631	-	Eppendorf research 100 to 1000 ul - Gilson pipetman p1000 - Biohit proline pr1000 - Brand transferpette up to 1000 ul - dsg sl - pette pt1000 - dsg wpw - pet 1000 ul - Elkay exel-pette ex1000 - Finnpiette research d1000 - Genex genexpette gx1000 - Jencons sealpette sp1000 - Nichiryo "5000-dg np1000" - Socorex "calibra 822-1000"
9632	PLURIPET PL100	Eppendorf research 10 to 100 ul - Gilson pipetman p100 - Brand transferpette up to 100 ul - dsg sl-pette pt50/pt100 - dsg wpw-pet 100 ul - Elkay exel-pette ex50/ex100 - Finnpiette research d40/d100 - Genex genexpette gx50/gx100 - Jencons sealpette sp50/sp100 - Nichiryo "5000-dg np100"
9633	PLURIPET PL1001	Gilson pipetman p1000 - Eppendorf 100 to 1000 ul - Biohit proline pr1000 - dsg sl-pette pt1000 - dsg wpw - pet 1000 ul - Elkay exel-pette ex1000 - Finnpiette research d1000 - Genex genexpette gx1000 - Jencons sealpette sp1000 - Nichiryo "5000-dg np1000"
9634	-	Eppendorf research 2 to 20 ul - Gilson pipetman p20 - Biohit proline pr20 - dsg sl-pette pt20 - dsg wpw-pet 20 ul - Elkay exel-pette ex20 - Finnpiette research d20 - Genex genexpette gx20 - Jencons sealpette sp20 - Nichiryo "5000-dg np20" - Socorex
9635	PLURIPET PL100	Eppendorf research 2 to 20 ul - Gilson pipetman p20 - Biohit proline pr20 - dsg sl-pette pt20 - dsg wpw-pet 20 ul - Elkay exel-pette ex20 - Finnpiette research d20 - Genex genexpette gx20 - Jencons sealpette sp20 - Nichiryo "5000-dg np20" - Socorex
9636	PLURIPET PL200	Eppendorf research 2 to 20 ul - Gilson pipetman p20 - Biohit proline pr20 - dsg sl-pette pt20 - dsg wpw-pet 20 ul - Elkay exel-pette ex20 - Finnpiette research d20 - Genex genexpette gx20 - Jencons sealpette sp20 - Nichiryo "5000-dg np20" - Socorex
9637	-	Eppendorf 300 ul - Biohit proline pr200 and multichannel up to 300 ul - dsg sl-pette - Elkay exel-pette ex200 - Finnpiette research and multichannel - Genex genexpette gx200 and multichannel up to 250 ul - Jencons sealpette sp200 and multichannel up to 250 ul - Nichiryo
9638	PLURIPET PL2, PLURIPET PL10	Gilson pipetman p2, p10 - Biohit proline pr10 - dsg sl-pette pt10 - Elkay exel-pette ex10 - Finnpiette research d2, d10 - Genex genexpette gx10 - Jencons sealpette sp10 - Nichiryo "5000-dg np2, np10"
9639	PLURIPET PL20	Eppendorf research - Gilson pipetman - Biohit proline - dsg sl-pette - dsg wpw - pet - Elkay exel-pette - Finnpiette research - Genex genexpette - Jencons sealpette -



CAPACITÀ 0,5-10 µL

Compatibilità: **Kartell®** PL20, Eppendorf® (2-20 µl) Hamilton®

CAPACITY 0,5-10 µL

Compatibility: **Kartell®** PL20, Eppendorf® (2-20 µl) Hamilton®

CAPACITÉ 0,5-10 µL

Compatibilité: **Kartell®** PL20, Eppendorf® (2-20 µl) Hamilton®

Art.	Colore / Colour / Couleur	Tipo / Type / Type	Confezione / Packing / Conditionnement
9630	Neutro / neutral / neutre	Eppendorf® Cristal	Rack ster



CAPACITÀ 0,5-10 µL

Compatibilità: Gilson®

CAPACITY 0,5-10 µL

Compatibility: Gilson®

CAPACITÉ 0,5-10 µL

Compatibilité: Gilson®

Art.	Colore / Colour / Couleur	Tipo / Type / Type	Confezione / Packing / Conditionnement
9638	Neutro / neutral / neutre	Gilson®	Rack ster



CAPACITÀ 2-20 µL

Compatibilità: **Kartell®** PL100, Gilson®

CAPACITY 2-20 µL

Compatibility: **Kartell®** PL100, Gilson®

CAPACITÉ 2-20 µL

Compatibilité: **Kartell®** PL100, Gilson®

Art.	Colore / Colour / Couleur	Tipo / Type / Type	Confezione / Packing / Conditionnement
9639	Neutro / neutral / neutre	Eppendorf®	Rack ster



CAPACITÀ 1-30 µL

Compatibilità: Gilson®

CAPACITY 1-30 µL

Compatibility: Gilson®

CAPACITÉ 1-30 µL

Compatibilité: Gilson®

Art.	Colore / Colour / Couleur	Tipo / Type / Type	Confezione / Packing / Conditionnement
9634	Neutro / neutral / neutre	Gilson®	Rack ster

CAPACITÀ 1-100 µL

Compatibilità: **Kartell®** PL100, Gilson®

CAPACITY 1-100 µL

Compatibility: **Kartell®** PL100, Gilson®

CAPACITÉ 1-100 µL

Compatibilité: **Kartell®** PL100, Gilson®



Art.	Colore / Colour / Couleur	Tipo / Type / Type	Confezione / Packing / Conditionnement
9635	Neutro / neutral / neutre	Gilson®	Rack ster

CAPACITÀ 5-100 µL

Compatibilità: **Kartell®** PL100, Eppendorf® (10-100 µl), Gilson, Socorex®, Biohit®, Nichiryo®, Brand®, Hamilton®

CAPACITY 5-100 µL

Compatibility: **Kartell®** PL100, Eppendorf® (10-100 µl), Gilson, Socorex®, Biohit®, Nichiryo®, Brand®, Hamilton®

CAPACITÉ 5-100 µL

Compatibilité: **Kartell®** PL100, Eppendorf® (10-100 µl), Gilson, Socorex®, Biohit®, Nichiryo®, Brand®, Hamilton®



Art.	Colore / Colour / Couleur	Tipo / Type / Type	Confezione / Packing / Conditionnement
9632	Neutro / neutral / neutre	Eppendorf®	Rack ster

CAPACITÀ 1-160 µL

Compatibilità: **Kartell®** PL200, Gilson®

CAPACITY 1-160 µL

Compatibility: **Kartell®** PL200, Gilson®

CAPACITÉ 1-160 µL

Compatibilité: **Kartell®** PL200, Gilson®



Art.	Colore / Colour / Couleur	Tipo / Type / Type	Confezione / Packing / Conditionnement
9636	Neutro / neutral / neutre	Gilson®	Rack ster

CAPACITÀ 2-200 µL

Compatibilità: **Kartell®**, PL200, Gilson®, Eppendorf®, Socorex®, Biohit®, Nichiryo®, Brand®, Hamilton®

CAPACITY 2-200 µL

Compatibility: **Kartell®**, PL200, Gilson®, Eppendorf®, Socorex®, Biohit®, Nichiryo®, Brand®, Hamilton®

CAPACITÉ 2-200 µL

Compatibilité: **Kartell®**, PL200, Gilson®, Eppendorf®, Socorex®, Biohit®, Nichiryo®, Brand®, Hamilton®



Art.	Colore / Colour / Couleur	Tipo / Type / Type	Confezione / Packing / Conditionnement
9629	Neutro / neutral / neutre	Universal	Rack ster



CAPACITÀ 5-300 µL

Compatibilità: Eppendorf®, Gilson®, Biohit®, Hamilton®

CAPACITY 5-300 µL

Compatibility: Eppendorf®, Gilson®, Biohit®, Hamilton®

CAPACITÉ 5-300 µL

Compatibilité: Eppendorf®, Gilson®, Biohit®, Hamilton®

Art.	Colore / Colour / Couleur	Tipo / Type / Type	Confezione / Packing / Conditionnement
9637	Neutro / neutral / neutre	Eppendorf®	Rack ster.



CAPACITÀ 100-1000 µL

Compatibilità: **Kartell®** PL1001, Eppendorf® (100-1000 µl), Gilson®, Socorex®, Hamilton®

CAPACITY 100-1000 µL

Compatibility: **Kartell®** PL1001, Eppendorf® (100-1000 µl), Gilson®, Socorex®, Hamilton®

CAPACITÉ 100-1000 µL

Compatibilité: **Kartell®** PL1001, Eppendorf® (100-1000 µl), Gilson®, Socorex®, Hamilton®

Art.	Colore / Colour / Couleur	Tipo / Type / Type	Confezione / Packing / Conditionnement
9633	Neutro / neutral / neutre	Eppendorf®, Gilson®	Rack ster.



CAPACITÀ 101-1000 µL

Compatibilità: Eppendorf® (100-1000 µl), Gilson®, Socorex®, Biohit®, Nichiryo®, Brand®, Hamilton®

CAPACITY 101-1000 µL

Compatibility: Eppendorf® (100-1000 µl), Gilson®, Socorex®, Biohit®, Nichiryo®, Brand®, Hamilton®

CAPACITÉ 101-1000 µL

Compatibilité: Eppendorf® (100-1000 µl), Gilson®, Socorex®, Biohit®, Nichiryo®, Brand®, Hamilton®

Art.	Colore / Colour / Couleur	Tipo / Type / Type	Confezione / Packing / Conditionnement
9631	Neutro / neutral / neutre	Eppendorf®	Rack ster.



SCATOLE VUOTE PER PUNTALI CON FILTRO IN RACK

Scatole vuote in PP di colore grigio, con coperchio a pressione, per puntali con filtro

EMPTY BOXES FOR RACKED PIPETTE FILTER TIPS

Gray empty PP boxes with snapon lid for pipette filter tips.

BOÎTES VIDES POUR EMBOUTS AVEC FILTRE EN RACK

Boîtes vides en PP de couleur grise, avec couvercle à pression pour les embouts avec filtre

Art.	Colore / Colour / Couleur	Materiale / Material / Matière
9756	Grigio / Grey / Gris	PP